

Pressure Reducing

PRV-17

Direct Acting Reducing Valve

SF International reserves the right to change the designs and/or materials of its products without notice, ©2013 SF International



PRV-17 is a direct acting pressure reducing valve for small steam or gas pressure reducing applications. Its compact design makes it ideal for point of use installations, providing accurate pressure control under stable load conditions. It also offers a cost effective alternative to more sophisticated valves. It can be supplied with screwed connections BSPT (BS 21) or NPT (ANSI-B1.20.1). Flanges according to ANSI-B16.5 class. Contact factory for other connection options.

FEATURES

Model	PRV-17
Sizes	1/2", 3/4", 1"
Connections	Screwed, Flanged
Fluid	Steam, Air, Inert Gases
Body Material	GGG 40.3 Ductile Iron
PMO Max. Oper. Pressure	250 psig
TMO Max. Oper. Temperature	450°F

HOW TO ORDER

Specify:

- Model
- Sizes and type of connection

Example: 1 SF International Direct Acting Reducing Valve model PRV17 with 1" body and BSPT connections fitted with type B spring.

DIMENSIONS & WEIGHT (INCHES & POUNDS)

DN	A	B	C	D	KV	Weight
1/2"	0.66	0.33	0.18	0.12	1.50	4.90
3/4"	0.66	0.33	0.18	0.12	2.5	4.18
1"	0.66	0.37	0.18	0.15	3.5	13.20

CAPACITY TABLE FOR STEAM (lb/h)

Pressure (psig)		Sizes		
Inlet	Outlet	1/2"	3/4"	1"
24	3	13	15	22
24	21	66	82	115
57	6	42	53	71
57	43	165	203	284
85	9	101	126	181
85	71	234	291	414
114	11	119	148	207
114	85	304	381	540
142	14	128	161	231
142	114	392	485	677
171	17	161	209	291
171	122	514	637	913
213	21	203	249	355
213	122	529	783	1,012
242	24	229	271	381
242	122	556	758	1,054

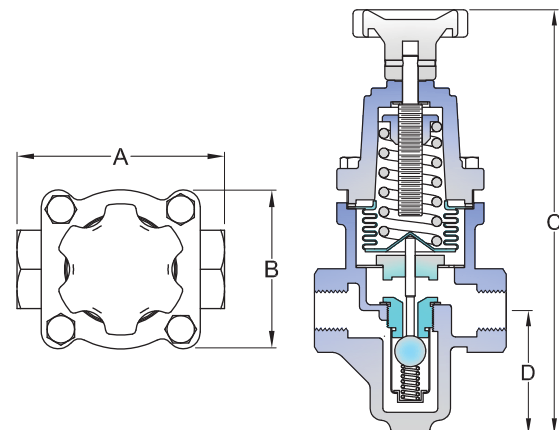


DOWNSTREAM PRESSURE RANGES

Type A (Grey): 2 to 24 psig

Type B (Green): 20 to 57 psig

Type C (Orange): 50 to 122 psig



CAPACITY TABLE FOR COMPRESSED AIR (lb/h)

Pressure (psig)		Sizes		
Inlet	Outlet	1/2"	3/4"	1"
24	0.20	0.6	0.8	1.1
24	1.50	21.8	26.3	40.2
57	0.40	16.2	17.9	32.4
57	3.00	55.9	68.2	104.5
85	0.60	24.0	27.9	46.4
85	5.00	80.5	100.6	150.9
114	0.80	38.0	46.4	76.6
114	6.00	102.8	128.5	187.8
142	1.00	42.5	55.9	80.5
142	8.00	128.5	161.0	237.5
171	1.20	55.9	70.4	104.5
171	8.60	171.0	211.2	318.0
213	1.50	64.3	80.5	120.7
213	8.60	192.8	237.5	463.9
242	1.70	76.6	96.7	140.8
242	8.60	199.0	251.5	366.1

REGULATING



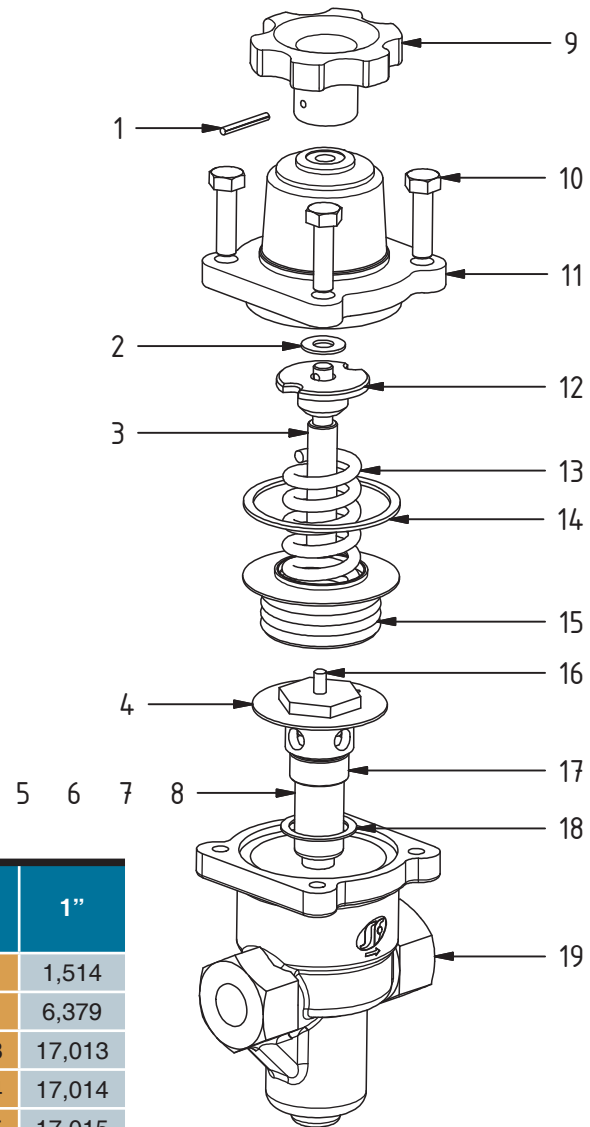
Pressure Reducing

PRV-17

Direct Acting Reducing Valve

REPAIRS AND MATERIALS

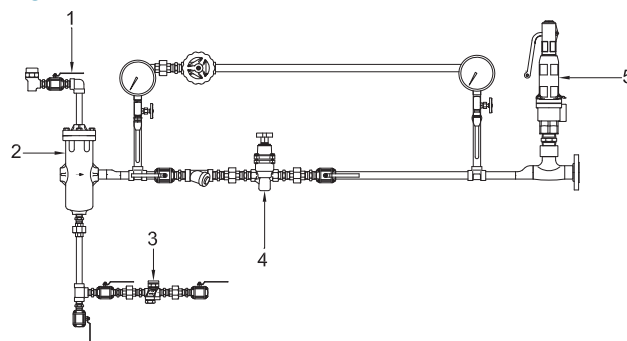
Pos.	Description	Material
1	Stud	AISI 304 SS
2	Spring Plate	AISI 304 SS
3	Cursor	AISI 304 SS
4	Washer	AISI 304 SS
5	Valve	AISI 304 SS
6	Spring	AISI 304 SS
7	Strainer Screen	AISI 304 SS
8	Spring Seat	Polipropileno
9	Handle	Aço Carbono 8,8
10	Screws	GGG 40.3 Ductile Iron
11	Cover	GGG 40.3 Ductile Iron
12	Spring Hose	SAE 1070 CS
13	Spring Adjustment	AISI 304 SS
14	Body Gasket	AISI 304 SS
15	Bellows	AISI 304 SS
16	Pushrod	AISI 304 SS
17	Seat	AISI 420 SS
18	Seat Gasket	Copper
19	Body	GGG 40.3 Nodular Iron



HOW TO ORDER SPARE PARTS (CODE)

Model	Description	Pos.	1/2"	3/4"	1"
PRV 17	Bellows Assy	15	1,514	1,514	1,514
	Seat Assy	5, 6, 7, 8, 16, 17, 18	6,363	6,378	6,379
	Spring A	13	17,013	17,013	17,013
	Spring B	13	17,014	17,014	17,014
	Spring C	13	17,015	17,015	17,015
	Handle	9	10,161	10,161	10,161

TYPICAL INSTALLATION



Title:	
1	Stop Valve
2	Separator
3	Steam Trap
4	PRV
5	Safety Valve

INSTALLATION INSTRUCTIONS

This valve should be installed in a horizontal pipeline with the direction of flow as indicated by the arrow on the valve body.

SAFETY, INSTALLATION AND MAINTENANCE

For safety, installation and maintenance information see instructions supplied with the product (MI-0728-11).