

Pipeline Accessories

VRD-132

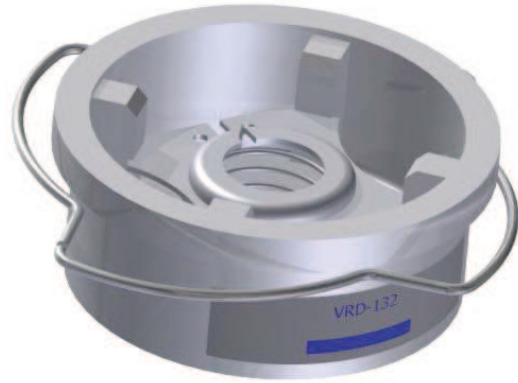
Stainless Steel Check Valve

SF International reserves the right to change the designs and/or materials of its products without notice, ©2013 SF International



ACCESSORIES

VRD-132 is a check valve to be installed between flanges, especially designed to avoid the return of liquid, gases or steam in industrial piping. It is also applied as bottom-placed valve in pumping line or vacuum breaker. It can be fitted between flanges BS 10, tables "E" and "H". BS 4504 / DIN PN 6, 10, 16, 25, 40, or ANSI 150 / 300.



FEATURES

Product Family	VRD
Sizes	1/2" to 6"
Connections	Between Flanges Installation
Body Material	ASTM A 316 CF8M SS
PMO Max. Oper. Pressure	569 psig
TMO Max. Oper. Temperature	752 °F

AVAILABLE MODELS

VRD-132

HOW TO ORDER

Specify:

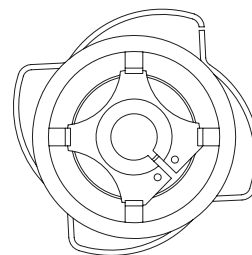
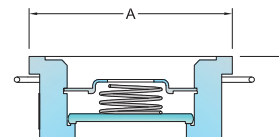
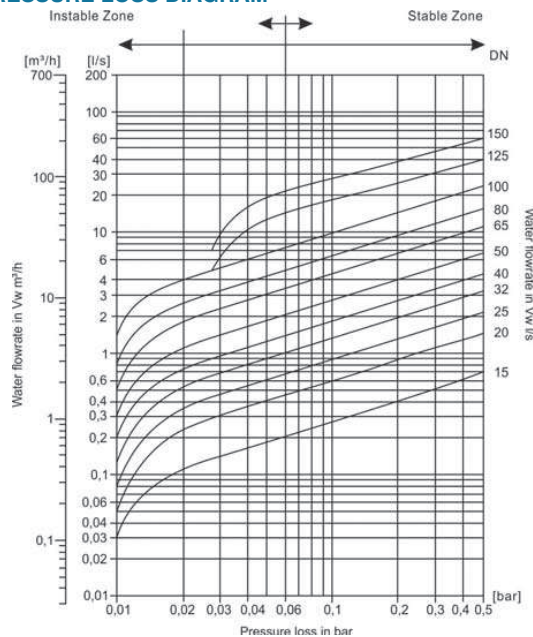
- Model
- Sizes and type of connection

Example: 1 SF International Check Valve model VRD-132 with 1/2" body.

DIMENSIONS & WEIGHT (INCHES & POUNDS)

DN	A	B	Weight
1/2"	0.63	1.69	0.22
3/4"	0.75	2.05	0.31
1"	0.87	2.44	0.51
1 1/2"	1.26	3.35	1.41
2"	1.57	3.74	2.20
2 1/2"	1.81	4.53	3.09
3"	1.99	5.20	4.63
4"	2.36	5.98	7.50
6"	4.13	8.66	8.82

PRESSURE LOSS DIAGRAM





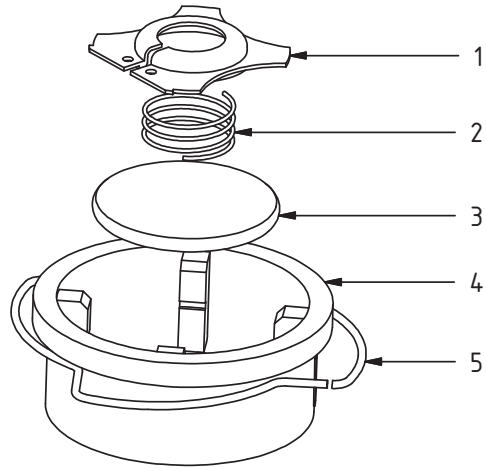
Pipeline Accessories

VRD-132

Stainless Steel Check Valve

COMPONENTS AND MATERIALS

Pos.	Description	Material
1	Spring Retainer	ASTM A 316 CF8M SS
2	Spring	ASTM A 316 CF8M SS
3	Disc	ASTM A 316 CF8M SS
4	Body	ASTM A 316 CF8M SS
5	Centering Ring	Carbon Steel



ACCESSORIES

HOW TO ORDER SPARE PARTS

Model	Description	Pos.	VRD 1/2"	3/4"	1"	1 1/4"	1 1/2"	2"	2 1/2"	3"	4"	6"
QV131	Disc, Spring Retainer & Spring Assy	3, 1, 2	19,268	19,269	19,270	19,271	19,272	19,273	19,274	19,275	19,276	19,277

AVERAGE OPENING PRESSURE

Size		Flow Direction			
		w/out spring		with spring	
mm	In	inch of water column			
		↑	↑	→	↓
20	3/4"	1.02	9.84	8.86	7.87
25	1"	1.02	9.84	8.86	7.87
32	1 1/4"	1.02	10.63	8.86	7.87
40	1 1/2"	1.34	10.63	9.25	7.87
50	2"	1.57	11.02	9.45	11.02
65	2 1/2"	1.65	11.42	9.65	7.87
80	3"	1.93	11.81	9.84	7.87
100	4"	2.24	12.60	10.24	7.87
150	6"	2.56	12.99	10.43	7.87

PRODUCT DISPOSAL

This product is totally recyclable. No ecological hazard is anticipated with the disposal of this product.

INSTALLATION NOTE

The VRD-132 must be fitted in accordance with the direction of flow arrow indicating correct fluid flow direction. When fitted with a spring it can be installed in any plane. When supplied without a spring it must be fitted in a vertical flow line with the flow from bottom-to-top.

SAFETY, INSTALLATION AND MAINTENANCE

For safety, installation and maintenance information see instructions supplied with the product (MI-0335-09).